



The Dirt is intended to provide a monthly summary of recent activities and inform you of upcoming events and important information. We have other mailing lists that target specific land uses or topics and communications are sent throughout the year. If you are interested in receiving additional information from ACCD, please contact us at info@asotincd.org or 509-552-8117.

❖ **NEW PROJECT FUNDS**

July 1st marked the beginning of the new fiscal year and new funding! Now is the opportune time to think about new projects, whether it is a new windbreak, a water development, or a riparian project, we can help. Come talk to us so we can help you get the planning underway!

❖ **COMMUNITY WILDFIRE PROTECTION PLAN**

Asotin County Emergency Management, the Asotin County Conservation District and The Ember Alliance are updating the Asotin County Community Wildfire Protection Plan (CWPP).

Up-to-date information and fire modeling will be used to assess local hazards and identify strategic investments to mitigate risk and promote preparedness. A CWPP will improve the ability of the fire protection district, landowners, and residents to prepare for, respond to, and adapt to wildfires. An updated plan will help our county qualify for grant funding to assist with wildfire preparedness throughout our area.

Community Wildfire Preparedness Survey Link

****Your input as a community member is a vital aspect of CWPP development and implementation****

Please take this anonymous survey to share your insights and thoughts about your wildfire risk and community preparedness. Your information will be kept confidential. *(Those who wish to provide proof of survey submission will be entered into a drawing for an amazing large prize!)*

❖ **FSA COUNTY COMMITTEE ELECTION**

FSA is currently taking nominations until August 1st for our local County Committee. The FSA committee is a paid position. The elected officials apply their knowledge and judgement to help administer FSA programs. The area of consideration is LAA 2, which is the southwest section of Asotin County. Tammey Boston is currently holding this position and is eligible for re-election. If you are interested in nominating yourself or someone else, please contact the FSA office for a list of eligible producers and/or a nomination form.

❖ **ASOTIN COUNTY NOXIOUS WEED CONTROL BOARD VACANCIES**

The Board of County Commissioners (BOCC) is seeking volunteers to join the Asotin County Noxious Weed Control Board (Board). The county is served by five districts: District 1 (Peola), District 2 (Cloverland), District 3 (Asotin Flats), District 4 (Tenmile), and District 5 (Clarkston/Asotin). The mission of the Asotin County Noxious Weed Control Board is to carry out the State Noxious Weed Law (RCW 17.10) in a manner which assists the land managers and land users of Asotin County in becoming ever better stewards of the land and resources by protecting and conserving our agricultural lands, recreational areas, and natural resources from the degrading impact of invasive noxious weeds. Anyone interested in serving on the board should submit a written application that includes the signatures of at least ten registered voters residing in the geographical area supporting the nomination to the Board of County Commissioners via email to bocc@co.asotin.wa.us or mail: Asotin County Commissioners, PO Box 250, Asotin, WA, 99402. The application for nominations will close at 5:00 p.m. PDT on July 29, 2024. A list of nominees will be posted by August 5, 2024, at the Asotin County Courthouse and Courthouse Annex and published in the Lewiston Morning Tribute for public comment. Appointments by the BOCC will take place no earlier than August 19, 2024, and no later than October 18, 2024.

❖ **NOXIOUS WEED SPOTLIGHT**

Rush Skeletonweed (*Chondrilla juncea*) is a class B listed noxious weed species in Washington state and control is required in Asotin County. It is an herbaceous biennial that grows up to five feet tall. Flowers are yellow with green bracts and approximately ½ inch in diameter. Stems are hairless and smooth except the stem bases have coarse downward pointing hairs. Stems are mostly leafless and have thin branches that give it the appearance of a “skeletonweed”. Seeds are approximately 0.1 inch with ribbed surfaces and white bristles (pappus) on one end that aid in wind dispersal similar to a dandelion seed. Rush skeletonweed has a simple, woody taproot that can grow 7 feet deep. Reproduces by seed and vegetatively from root fragments. One mature plant can produce up to 20,000 seeds.

Controlling rush skeletonweed can be difficult due to its deep taproot and lack of leaf surface area. It is recommended to apply herbicide when it’s in the rosettes stage and has the most leaf surface available for herbicide uptake. Several herbicide products are recommended for rush skeletonweed post-emergent control including tordon (picloram), milestone (aminopyralid), and transline (clopyralid). For pre-emergent control recommended herbicide products include rejuvra (indazaflam) and plateau (imazapic).

Rush Skeletonweed is found throughout Asotin County in pastures, rangeland, crop fields, and roadsides. If you have any questions, please contact Kodie Wight at (509) 552-8119 or kodie@asotincd.org.



Rush Skeletonweed images

Rush Skeletonplant (*Lygodesmia juncea*) is a similar species native to North America. It looks almost identical to Rush Skeletonweed except it has purple flowers and more basal leaves. Rush Skeletonplant has been documented in Asotin County and other eastern Washington counties. Since it is a native species, treating/controlling rush skeletonplant is discouraged.



Rush Skeletonplant images

❖ **EQUIPMENT RENTAL**

Even with chilly mornings, it is the perfect time to think about spring chores. Whether your project is big or small, ACCD has the right size equipment available to rent! The goal is to assist livestock producers with manure management projects.

- Large-scale manure trommel
- Large-scale manure spreader
- Small-scale manure spreader

To learn more about our equipment, rental program, and to schedule spring manure spreading, contact Tony Monzingo at 509-552-2615 or tony@asotincd.org

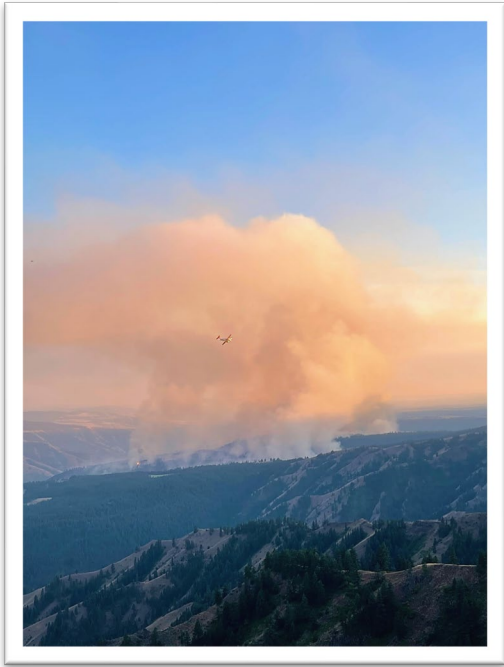
UPCOMING DATES

- **ACCD Board Meeting: August 8th at 6pm**

FUN FACT!

Wildfires can travel at speeds of up to 14.27 miles per hour, but the rate depends on the environment and fuel type:

- Grasslands: Wildfires can travel up to 14.27 miles per hour in grasslands.
- Forests: Wildfires can travel up to 6.7 miles per hour in forests.
- Uphill: Wildfires move faster uphill because heat rises



Cougar Creek Fire, Asotin County –
July 15, 2024



Snake River at Heller Bar