



*The Dirt is intended to provide a monthly summary of recent activities and inform you of upcoming events and important information. We have other mailing lists that target specific land uses or topics and communications are sent throughout the year. If you are interested in receiving additional information from ACCD, please contact us at [info@asotincd.org](mailto:info@asotincd.org) or 509-552-8117.*

❖ **COMMUNITY WILDFIRE PROTECTION PLAN**

Asotin County Emergency Management, the Asotin County Conservation District and The Ember Alliance are updating the Asotin County Community Wildfire Protection Plan (CWPP).

Up-to-date information and fire modeling will be used to assess local hazards and identify strategic investments to mitigate risk and promote preparedness. A CWPP will improve the ability of the fire protection district, landowners, and residents to prepare for, respond to, and adapt to wildfires. An updated plan will help our county qualify for grant funding to assist with wildfire preparedness throughout our area.

**[Community Wildfire Preparedness Survey Link](#)**

**\*\*Your input as a community member is a vital aspect of CWPP development and implementation\*\***

Please take this anonymous survey to share your insights and thoughts about your wildfire risk and community preparedness. Your information will be kept confidential. *(Those who wish to provide proof of survey submission will be entered into a drawing for an amazing large prize!)*

❖ **ASOTIN COUNTY NOXIOUS WEED CONTROL BOARD VACANCIES**

The Board of County Commissioners (BOCC) is seeking volunteers to join the Asotin County Noxious Weed Control Board (Board). The county is served by five districts: District 1 (Peola), District 2 (Cloverland), District 3 (Asotin Flats), District 4 (Tenmile), and District 5 (Clarkston/Asotin). The mission of the Asotin County Noxious Weed Control Board is to carry out the State Noxious Weed Law (RCW 17.10) in a manner which assists the land managers and land users of Asotin County in becoming ever better stewards of the land and resources by protecting and conserving our agricultural lands, recreational areas, and natural resources from the degrading impact of invasive noxious weeds. The following applications were submitted and will be considered by the BOCC.

District 1 – None

District 2 – Bruce Petty

District 3 – None

District 4 – Jerry Hendrickson

District 5 – Brit Ausman, Nelle Murray

Appointments by the BOCC will take place no earlier than August 19, 2024, and no later than October 18, 2024. Public comment can be submitted via email to [bocc@co.asotin.wa.us](mailto:bocc@co.asotin.wa.us), by mail: Asotin County Commissioners, PO Box 250, Asotin, WA, 99402 or in person during the Open to the Public at regular scheduled Commissioner meetings.

❖ **NOXIOUS WEED SPOTLIGHT**

Medusahead (*Taeniatherum caput-medusae*) is an invasive winter annual grass that is listed as a class C species in Washington state. Inflorescences are a dense spike with long twisting awns that are covered in small barbs. Awns can grow up to 4 inches long. Leaves are open sheaths that may be covered in short soft hairs. Leaves are rolled while in the bud stage and flatten when mature. Stems are thin, round in cross section, have 3 to 6 nodes and are usually covered in small hairs. Medusahead only reproduces by seed. Seeds have barbs that adhere to fur, hair, and clothing. It is highly competitive, displaces native

vegetation, and depletes soil moisture. Residue left behind becomes a fire hazard and awns can damage the mouths of grazing animals.

Manual and mechanical control can be effective if completed before plants produce seed. Seed is viable for up to two years. For pre-emergent applications recommended herbicides include indaziflam (Rejuvra), imazapic (Plateau or Panoramic 2SL), and Sulfometuron (Landmark XP). Grazing and replant restrictions apply to most pre-emergent herbicides. Glyphosate (roundup) and aminopyralid (milestone) are recommended for post-emergent control but these herbicides will damage broadleaf plants.

Medusahead is found in Asotin County in pastures, rangeland, crop fields, and roadsides. It grows well in soils with high clay content and deep soil moisture. If you have any questions, please contact Kodie Wight at (509) 552-8119 or [kodie@asotincd.org](mailto:kodie@asotincd.org).



#### ❖ **EQUIPMENT RENTAL**

Even with chilly mornings, it is the perfect time to think about spring chores. Whether your project is big or small, ACCD has the right size equipment available to rent! The goal is to assist livestock producers with manure management projects.

- Large-scale manure trommel
- Large-scale manure spreader
- Small-scale manure spreader

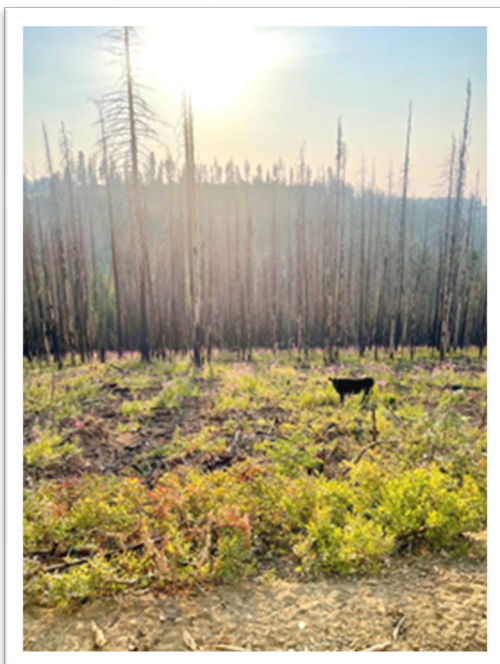
To learn more about our equipment, rental program, and to schedule spring manure spreading, contact Tony Monzingo at 509-552-2615 or [tony@asotincd.org](mailto:tony@asotincd.org)

#### **UPCOMING DATES**

- **Labor Day: September 1<sup>st</sup> – Office Closed**
- **ACCD Board Meeting: September 5<sup>th</sup> at 6pm**

#### **FUN FACT!**

58% of fires caused in Asotin County were from lightning strikes.



Lick Creek burn scar: fire weed is prominent.



Large, downed Ponderosa Pine on Lick Creek from 2021 fire