



*The Dirt is intended to provide a monthly summary of recent activities and inform you of upcoming events and important information. We have other mailing lists that target specific land uses or topics and communications are sent throughout the year. If you are interested in receiving additional information from ACCD, please contact us at [info@asotincd.org](mailto:info@asotincd.org) or 509-552-8117.*

❖ **CWPP PUBLIC COMMENT PERIOD**

The draft Community Wildfire Protection Plan is now available for public comments. Public comment is open from December 11, 2024 - January 8, 2025. We are asking any Asotin County resident who would like to provide input on the plan to visit our website with specific links to the plan and comment page or reach out to ACCD ([lacy@asotincd.org](mailto:lacy@asotincd.org) or [jennifer@asotincd.org](mailto:jennifer@asotincd.org)). Your input on the plan, which can affect residential and rural areas of Asotin County, is important and will be considered when developing projects and goals included in the final version of the updated CWPP. The draft plan is available on our website: <https://asotincd.org/cwpp/>

CWPP is a document that identifies local fire danger and helps guide the community in reducing that danger. The plan highlights local resources, knowledge, and needs, and offers achievable solutions to the issues that the community may have faced in the past in implementing fire mitigation actions.

❖ **ASOTIN CREEK PA-3.2 FISH HABITAT RESTORATION**

The Asotin County Conservation District (ACCD) is requesting bids for the RFB 2024-02 Asotin Creek PA-3.2 Fish Habitat Restoration. ACCD is seeking a contractor for the fish habitat restoration project planned on Asotin Creek in Asotin County.

More detailed information will be provided in the bid package and at the pre-bid meeting which will be held on **January 7, 2025, at 11:00 am.** at the project site located on Asotin Creek approximately 4.3 miles west of the town of Asotin at 7095 Asotin Cr Rd. Bidder attendance is strongly encouraged but not mandatory.

Sealed bids will be accepted for the described project **until 4:30 p.m., PST, February 5, 2025.** Bids must be submitted on the prescribed bid form that is included in the bid package and in a **sealed** envelope marked clearly on the outside "**2024-02 Asotin Creek PA-3.2 Fish Habitat Restoration**". All bids must be received at the Asotin County Conservation District office, 1397 Port Drive, Clarkston, WA 99403 by the due date and time specified above. Postmarks are not sufficient.

Bids will be publicly opened and read aloud at the ACCD board meeting scheduled for 12:00 p.m. on February 6, 2025, at the **ACCD** office.

The complete bid package is available on the ACCD website at [www.asotincd.org](http://www.asotincd.org)

❖ **ACCD IS HIRING**

The Asotin County Conservation District is seeking **Restoration Crew Members** to join our team. This will be a full-time, hourly position. The members will work closely with landowners, ACCD professional staff, and partners to implement restoration projects. Starting compensation is \$18.00 to \$21.00 per hour DOQ/DOE plus a competitive benefit package. (Wage Range 3)

Job description and ACCD application instructions are available on our website at [www.asotincd.org](http://www.asotincd.org)

❖ **BOARD OF SUPERVISORS RECOGNITION**

While at the WACD Annual Meeting in early December, two of ACCD's Supervisors were recognized for their years of service on the Board. Jerry Hendrickson has served 25 years, and Rod Hostetler has served 15 years. Your dedication to ACCD has been phenomenal and truly appreciated!

❖ **WEATHER STATIONS**

ACCD owns 9 weather stations that are installed throughout Asotin County. Stations collect precipitation, temperature, and wind data. Data is publicly available with the easiest access at [WeatherUnderground.com](http://WeatherUnderground.com). Stations are installed at strategic points where there was little coverage by existing stations. ACCD plans on procuring more stations as funding allows.

The highest temperature ACCD weather stations recorded this year was 104.6 °F on Montgomery Ridge on August 2<sup>nd</sup>.

The lowest temperature ACCD stations recorded was -14.5 °F at the top of Asotin Grade on January 13<sup>th</sup>. The three original ACCD-owned stations are displayed on [AnatoneWeather.com](http://AnatoneWeather.com), with the goal of adding the rest of the stations when website bandwidth capacity allows. To see specific location information, follow the links below. Occasionally, stations experience outages and may be temporarily unavailable for viewing.

If you are interested in hosting a weather station in the future, please contact Keaton Martin at (509) 552-2613 or [keaton@asotincd.org](mailto:keaton@asotincd.org).

[ACCD1 \(South Cloverland\)](#)    [ACCD2 \(top of Asotin Grade\)](#)    [ACCD3 \(South Montgomery Ridge\)](#)

[ACCD4 \(Western edge of Peola Flat\)](#)    [ACCD5 \(North Cloverland\)](#)

[ACCD6 \(Near Onstot and Davis intersection\)](#)    [ACCD7 \(Sangster Rd\)](#)

[ACCD8 \(Southeast of 129 and Onstot intersection\)](#)    [ACCD9 \(Grouse Flat\)](#)

❖ **NOXIOUS WEED SPOTLIGHT**

Poison hemlock is a class B listed biennial with hollow stems that grow up to twelve feet tall. The stems are hairless with purple-reddish spots. Leaves are fern-like, toothed, and have a strong odor when crushed. It has small white flowers that grow in an umbrella shaped cluster. All plant parts are toxic to humans and livestock. Toxins remain potent in dried plant material.

Digging small infestations can be effective if the entire taproot is removed. Several herbicides can be used to control poison hemlock. Recommended herbicides for forest sites, non-cropland, and grazed areas include Garlon (triclopyr), Crossbow (triclopyr+2,4-D), and Escort XP (metsulfuron). Recommended herbicides for riparian areas include Habitat (imazapyr), Rodeo (glyphosate, non-selective), and Imox (imazamox).

Poison hemlock spreads rapidly and invades riparian areas, pastures, roadsides, and open areas. It prefers moist soils but is highly adaptable to other conditions. If you have any questions, please contact Kodie Wight at (509) 552-8119 or [kodie@asotincd.org](mailto:kodie@asotincd.org).



❖ **EQUIPMENT RENTAL**

Even though the mornings are now frosty, it is the perfect time to think about winter or even plan for spring chores. Whether your project is big or small, ACCD has the right size equipment available to rent! The goal is to assist livestock producers with manure management projects.

- Large-scale manure trowel
- Large-scale manure spreader
- Small-scale manure spreader

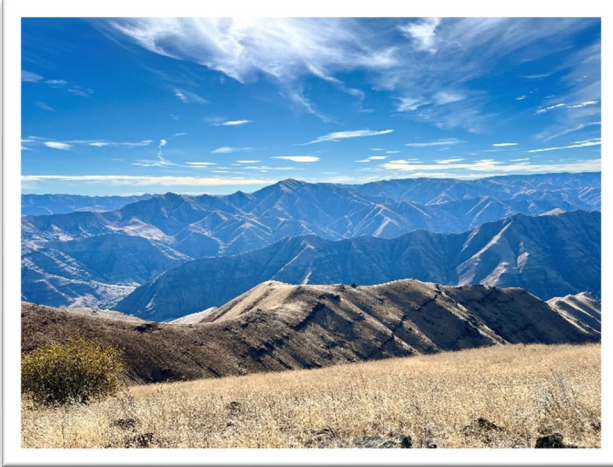
To learn more about our equipment, rental program, and to schedule spring manure spreading, contact ACCD at 509-552-8117 or [info@asotincd.org](mailto:info@asotincd.org)

**UPCOMING DATES**

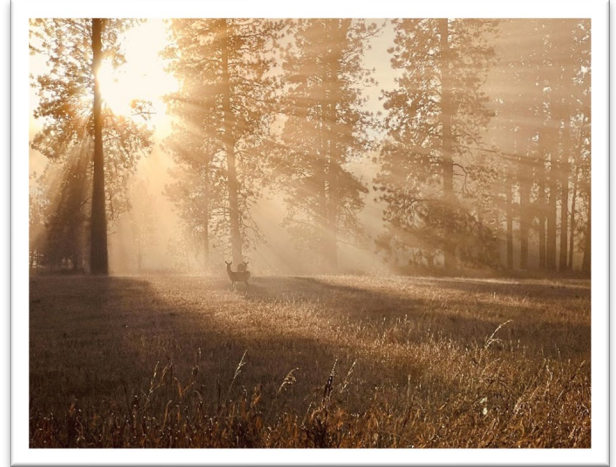
- **Office Closed – Christmas Eve & Christmas: December 24<sup>th</sup> & December 25<sup>th</sup> and New Year's Day: January 1<sup>st</sup>**
- **ACCD Board Meeting: January 9<sup>th</sup> at 12pm**
- **ACNWCB - Weed Board Meeting: January 28<sup>th</sup> at 6pm**

**FUN FACT!**

When is the first day of winter? In 2024, the winter solstice date is Saturday, December 21. How can we observe the effects of solstice ourselves? On the solstice day, stand outside at noon and look at your shadow. It's the longest shadow that you'll cast all year! Do this again on the day of the summer solstice, and you'll see almost no shadow.



Brisk fall in the Blue Mountains



Late fall sun warms up the local wildlife